



Media Release

Date: July 16, 2021

For immediate release

4:00 pm

Evacuation Order and Alert issued for Michaud Creek wildfire

Nelson, BC: On the recommendation of the BC Wildfire Service (BCWS), the Regional District of Central Kootenay (RDCK) has issued an Evacuation Order for properties in Electoral Area's J and K and an Evacuation Alert in Electoral Area K, specifically for the community of Edgewood, located along the west shore of Lower Arrow Lake, due to the Michaud Creek wildfire (N51765) approximately 19 kilometres south of Edgewood.

The Evacuation Order in Electoral Area's J and K runs from Bowman Creek along the west shore of Lower Arrow Lake up to Johnston Creek. The area may also include other properties and structures within the area not registered with the RDCK.

Effective immediately, residents in the Evacuation ORDER area must leave immediately. List of addresses currently under Evacuation Order are (see map below):

768 Lower Arrow Lake Cinnamon Lake Cabins

Residents and visitors are required to leave the affected ORDER area immediately and register online with Emergency Support Services (ESS) at: <https://ess.gov.bc.ca/>

Short-term assistance for immediate needs of food, shelter, and clothing maybe provided by ESS volunteers following registration at the above website.

ESS may not be able to accommodate your pets, so make sure you have prepared your pets by having appropriate cages, food, water and bowls, and ensure they are wearing identification. You may wish to arrange to have your pets cared for by family or friends.

The Evacuation Alert area starts at Johnston Creek and continues north to Highway 6, including the community of Edgewood. Under the Evacuation Alert, residents and visitors should be prepared to evacuate at a moment's notice. It is recommended to prepare an emergency kit and have a plan where you will go if the situation worsens and you need to evacuate (see map below).

The Michaud Creek wildfire was discovered on July 10 and is an estimated 450 hectares. BCWS has determined the cause to be lightning.

The RDCK EOC will provide further updates as more information becomes available.

For more information about evacuations and emergency preparedness, along with other resources, please visit www.rdck.ca/eocinfo. The RDCK EOC **public inquiry line is 250-352-7701**. This number will be staffed from 8:00 am to 8:00 pm.

For more information:

- Current RDCK Evacuation Alerts, Orders and Rescinds: www.rdck.ca/eocinfo or call 250-352-7701
- Sign up for RDCK Emergency Notification System to receive notification: <https://voyent-alert.com/ca/community/>
- BC Wildfire – Interactive Map of Current Fires: <https://governmentofbc.maps.arcgis.com/apps/dashboards/index.html#/f0ac328d88c74d07aa2ee385abe2a41b>
- Public weather alerts for BC from Environment Canada: https://weather.gc.ca/warnings/index_e.html?prov=bc
- Highway closures and conditions from DriveBC: <https://www.drivebc.ca/>
- For the BC Air Quality Health Index: <https://www.env.gov.bc.ca/epd/bcairquality/data/aqhi-table.html>
- Emergency preparedness information and tips from the Prepared BC website: <https://www2.gov.bc.ca/gov/content/safety/emergency-preparedness-response-recovery/preparedbc>

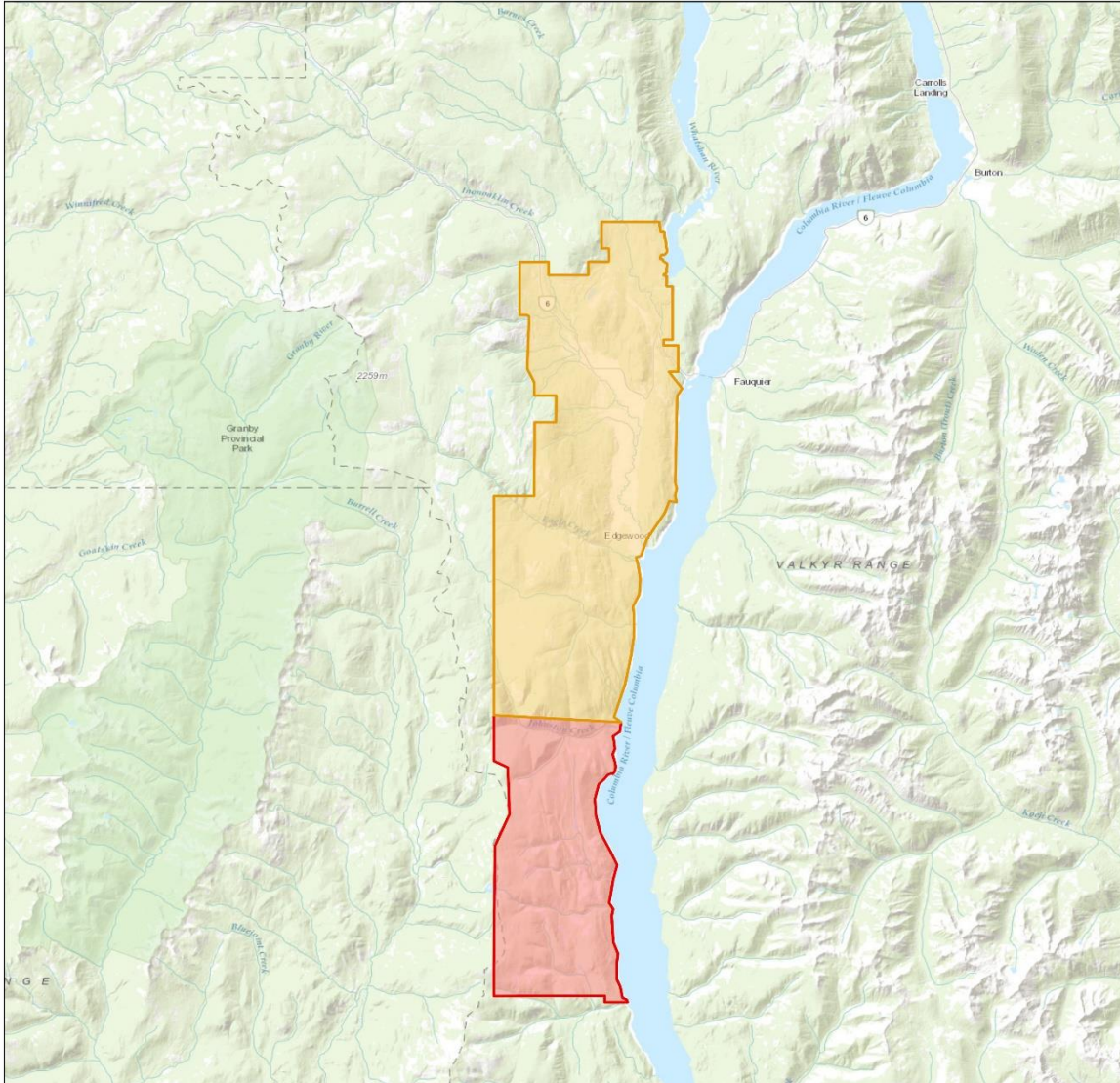
Incorporated in 1965, the Regional District of Central Kootenay (RDCK) is a local government that serves 60,000 residents in 11 electoral areas and nine member municipalities. The RDCK provides more than 160 services, including community facilities, fire protection and emergency services, grants, planning and land use, regional parks, resource recovery and handling, transit, water services and much more. For more information about the RDCK, visit www.rdck.ca.

-30-

For further information, please contact:


EOC Information Officer
Regional District of Central Kootenay
Tel: 250.352-7701
Email: eocinfo@rdck.bc.ca


Michaud Creek Evacuation Order



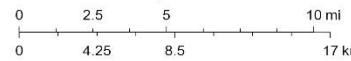
7/16/2021, 3:53:35 PM

Active Evacuation Areas

 Evacuation Alert

 Evacuation Order

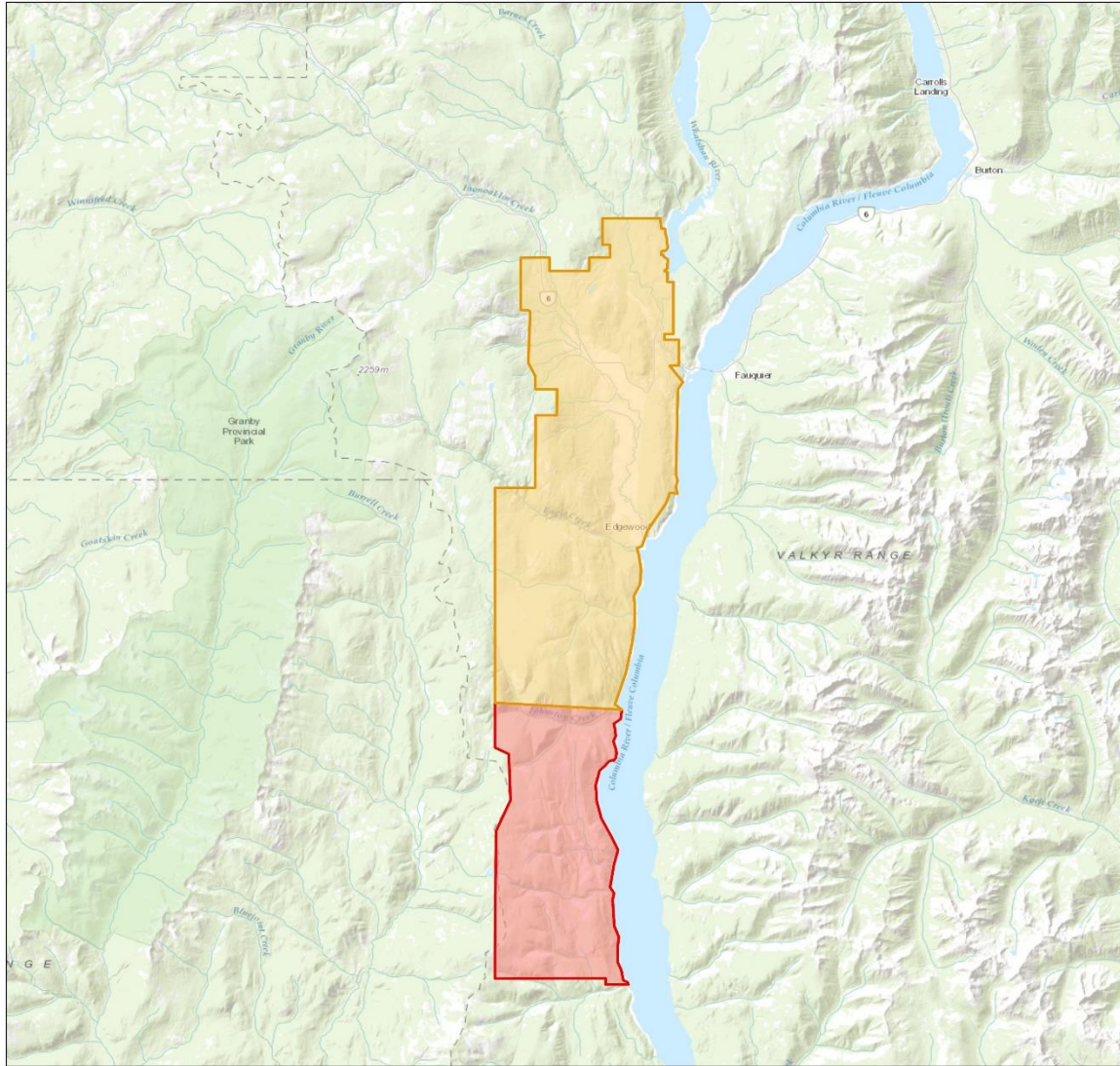
1:350,000



Esri, © OpenStreetMap contributors, HERE, Garmin, FAO, USGS, NGA, EPA, NPS, AAFC, NRCan


RDCK GIS Dept
The mapping information shown are approximate and are for reference purposes only.


Edgewood Evacuation Alert



7/16/2021, 3:55:20 PM

Active Evacuation Areas

 Evacuation Alert

 Evacuation Order

1:350,000

0 2.5 5 10 mi
0 4.25 8.5 17 km

Esri, © OpenStreetMap contributors, HERE, Garmin, FAO, USGS, NGA, EPA, NPS, AAFC, NRCAN

ROCK GIS Dept

The mapping information shown are approximate and are for reference purposes only.

S